

# **GGSP: Realisation of the Galileo Terrestrial Reference Frame**

***Wolfgang Söhne, Johannes Ihde***

**Federal Agency for Cartography and Geodesy**

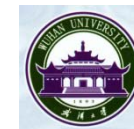
***Gerd Gendt, Markus Rothacher***

**GeoForschungsZentrum Potsdam**

***GGSP Prototype Team***



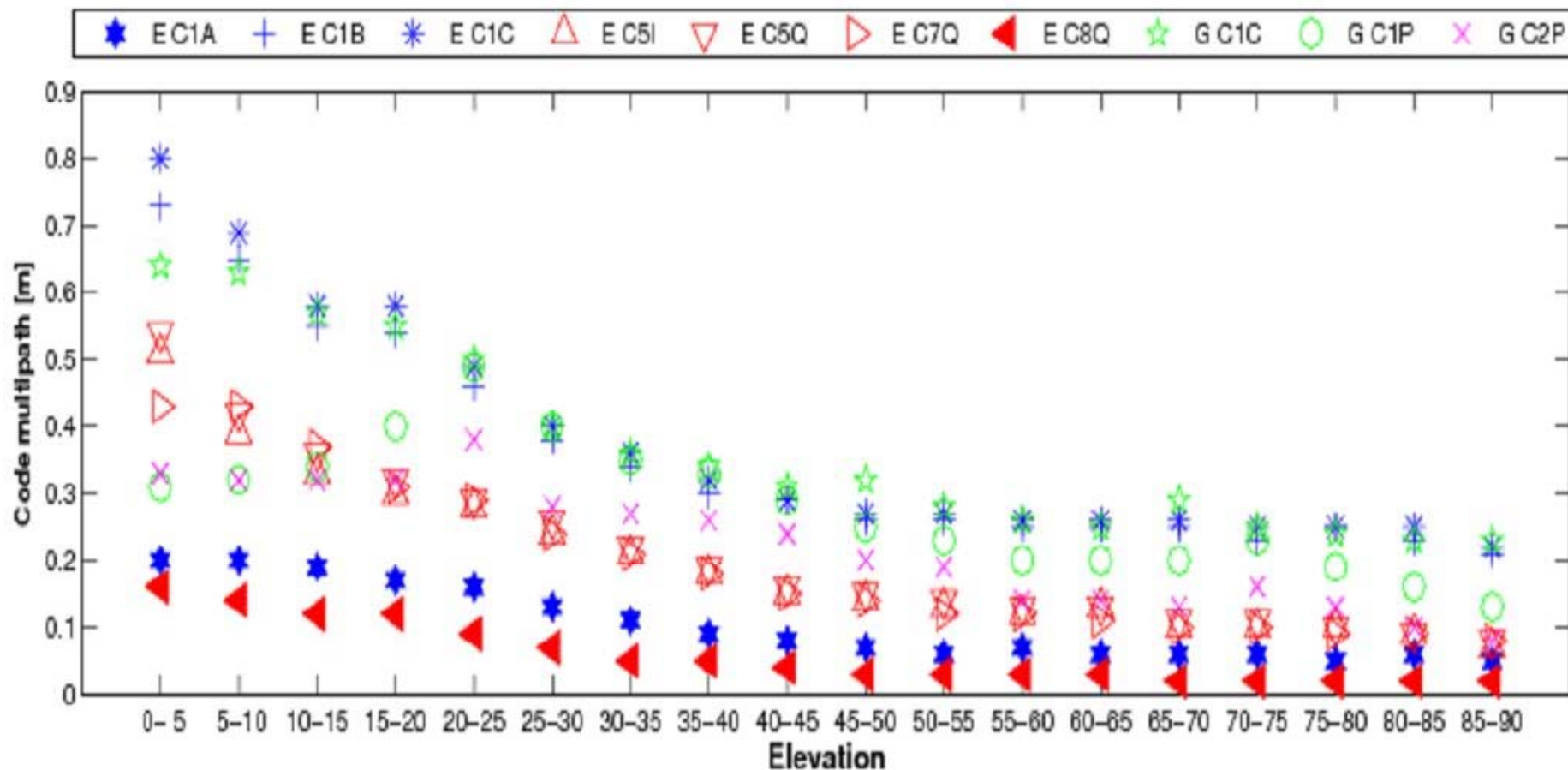
**Natural Resources  
Canada**



- **Introduction: Status of Galileo**
- **Status of the Galileo Geodetic Service Provider (GGSP) Prototype**
- **Derivation of the Galileo Terrestrial Reference Frame (GTRF)**
  - ◆ **GTRF realization**
  - ◆ **GTRF maintenance**
  - ◆ **Results**
- **Recommendations for the Galileo Reference Service Provider (GRSP)**

- **Financing of Galileo secured by EU finance minister decision, but**
- **Implementation delayed by several years → In-Orbit-Validation (IOV) phase n.e.t. end of 2009 → Full Operational Capacity (FOC) n.e.t. 2012**
- **Third bidder consortium for the Galileo Space Segment (beside EADS and OHB)? Bidding to start this summer**
- **Two experimental satellites started**

## ● GIOVE-A started Dec 2005 with two years

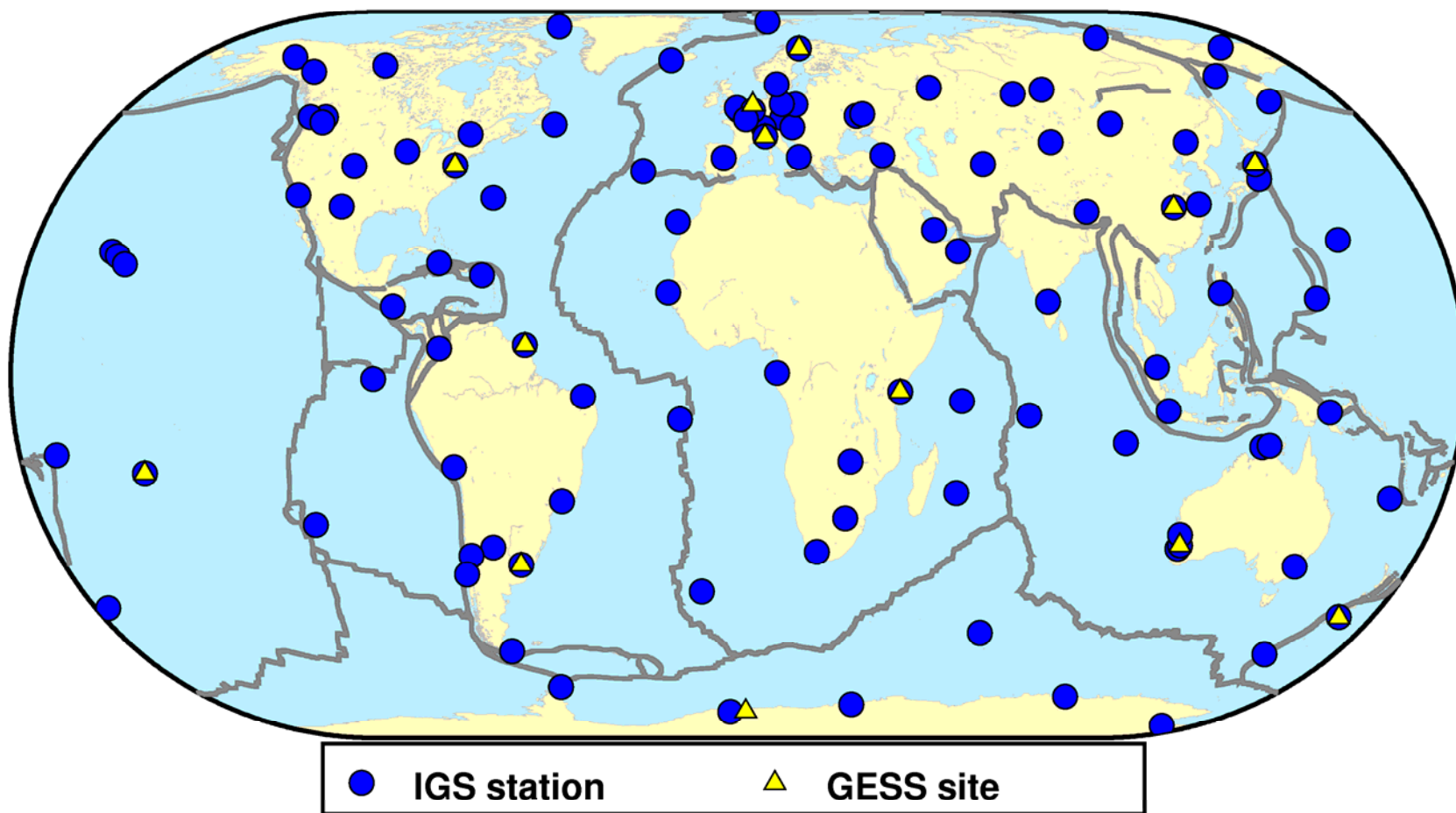


● Several results of GIOVE-A published (T. Springer, 2008)

## ● Promising first results of GIOVE-B

- **Galileo Geodetic Service Provider Prototype started in July 2005 as project of the 6th FP of the EU**
- **Prolongation until May 2009**
- **Main tasks:**
  - **Realization of a GTRF aligned to the ITRF**
  - **Inclusion of GSS when installed**
  - **Entity between GCS and services and users**
  - **Software extension for Galileo:**  
**Bernese, NAPEOS and EPOS “Galileo ready”**

- Initial realization in November 2007
- About 100 IGS sites and 13 GESS
- Campaign-wise analysis (4 weeks each three months)
- RINEX 3.0 as standard data format within GGSP for GPS+Galileo data
- Software tests and validation





## Ground network for GIOVE satellites





```

gmiz1290.08o - WordPad
Datei Bearbeiten Ansicht Einfügen Format ?

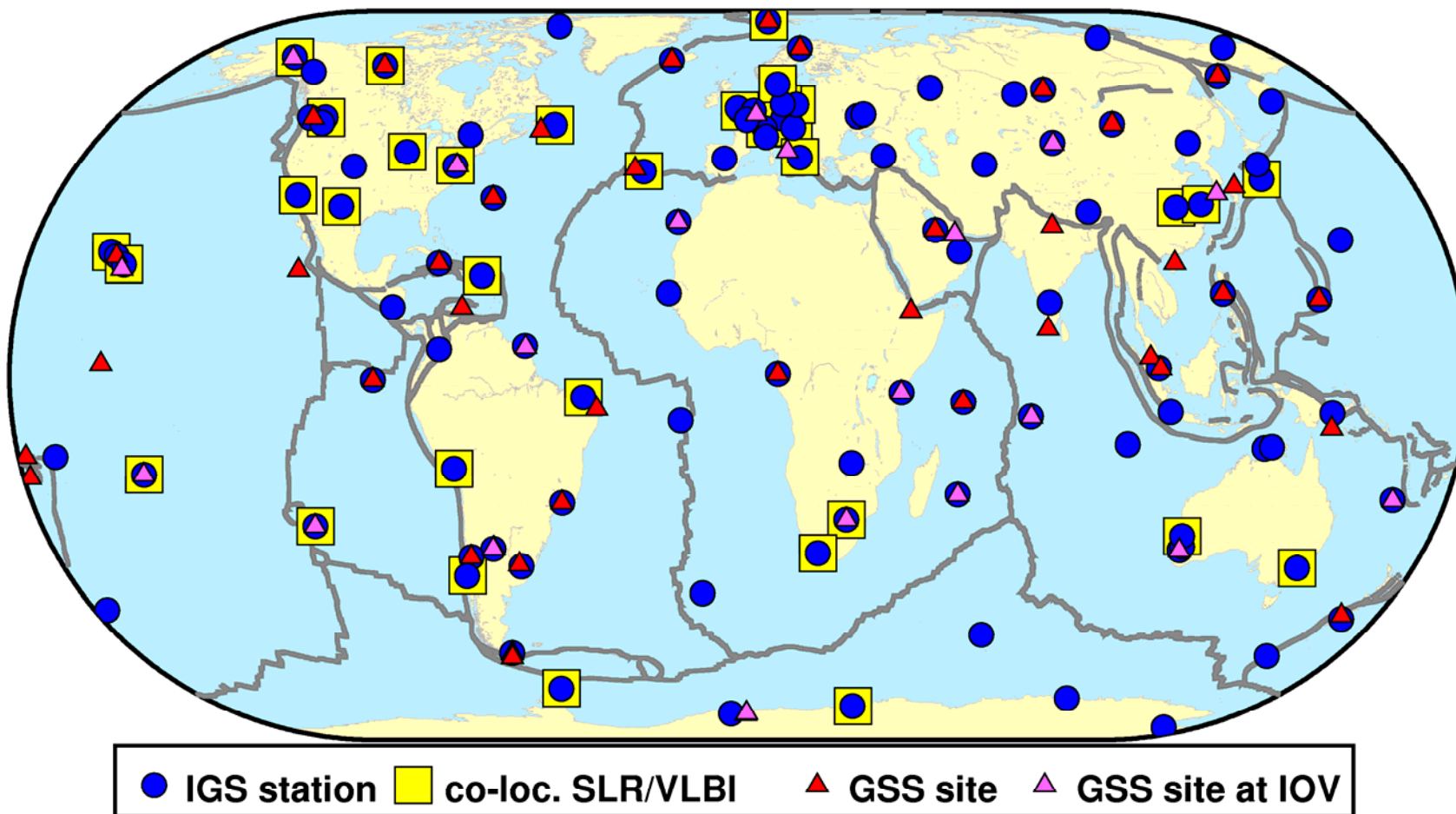
| 3.00 O M RINEX VERSION / TYPE
S2R ROOT 20080508 011406 UTC PGM / RUN BY / DATE
NONE MARKER NAME
DSF GSTBV2 ESA MARKER TYPE
GETR OBSERVER / AGENCY
REC # / TYPE / VERS
ANT # / TYPE
APPROX POSITION XYZ
0.0000 0.0000 0.0000 ANTENNA: DELTA H/E/N
2008 05 08 00 00 00.000 TIME OF FIRST OBS
2008 05 08 23 59 59.000 TIME OF LAST OBS
G 10 C1C L1C D1C S1C C1P S1P C2P L2P D2P S2P SYS / # / OBS TYPES
E 20 C1A L1A D1A S1A C1C L1C D1C S1C C7I L7I D7I S7I C7Q SYS / # / OBS TYPES
L7Q D7Q S7Q C8Q L8Q D8Q S8Q SYS / # / OBS TYPES
30.000 INTERVAL
END OF HEADER

> 2008 05 08 00 00 0.0000000 0 10
E01 24591291.897 7 -14715757.393 7 -2491.257 7 45.100 7 24591017.851 7 -11223464.902 7 -1908.872 7
44.500 7 .000 0 .000 0 .000 0 .000 0 .000 0 .000 0
.000 0 .000 0 .000 0 .000 0 .000 0
G17 24311484.912 7 -509388.344 7 -3796.762 7 46.500 7 24311483.757 5 32.300 5 24311478.219 5
99551403.789 5 -2958.536 5 32.500 5
G10 21935824.173 8 -15028859.027 8 2084.254 8 49.000 8 21935822.722 6 36.500 6 21935817.093 6
89823526.265 6 1624.167 6 36.800 6
G25 23493545.251 7 -6275729.847 7 533.415 7 45.900 7 23493544.944 5 33.300 5 23493539.082 5
96202140.518 5 415.591 5 33.300 5
G13 21509518.068 8 -19521125.682 8 -2111.863 8 51.500 8 21509517.107 6 36.800 6 21509508.675 6
88077863.610 6 -1645.601 6 37.300 6
G02 20340090.343 8 -27762074.008 8 1419.905 8 51.000 8 20340089.055 6 39.300 6 20340079.876 6
83289253.063 6 1106.511 6 40.500 6
G23 24473770.764 7 -4346840.640 7 -3407.089 7 42.600 7 24473769.644 4 24.300 4 24473761.253 4
100215943.138 4 -2654.776 4 24.300 4
G04 20660982.557 8 -23368148.768 8 -1105.740 8 50.700 8 20660981.149 6 38.500 6 20660974.285 6
84603239.904 6 -861.491 6 39.500 6
G07 23671150.138 7 -2985615.069 7 1973.360 7 45.900 7 23671149.281 5 34.300 5 23671143.598 5
96929403.204 5 1537.803 5 34.300 5
G27 23500116.010 7 -5946121.403 7 1730.349 7 44.600 7 23500114.692 4 29.800 4 23500109.462 4
96229048.365 4 1348.408 4 29.800 4

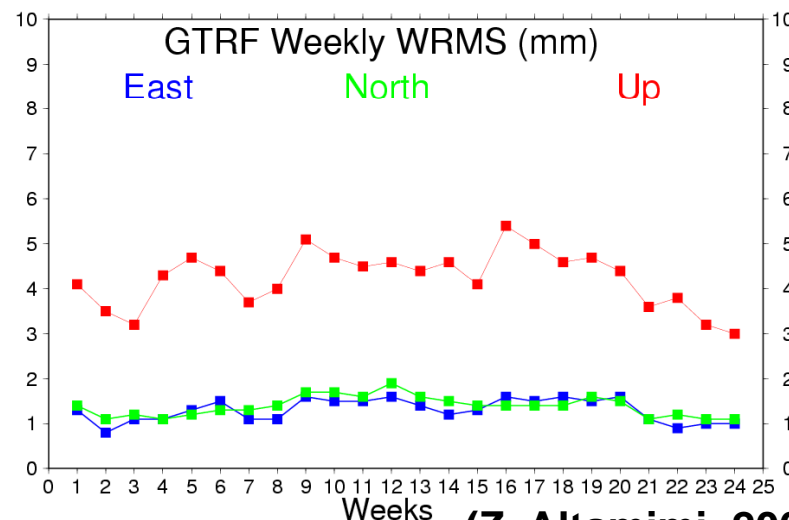
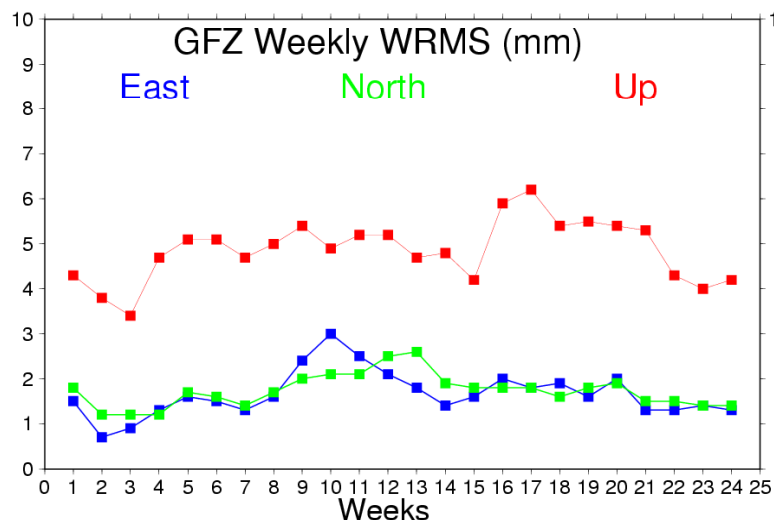
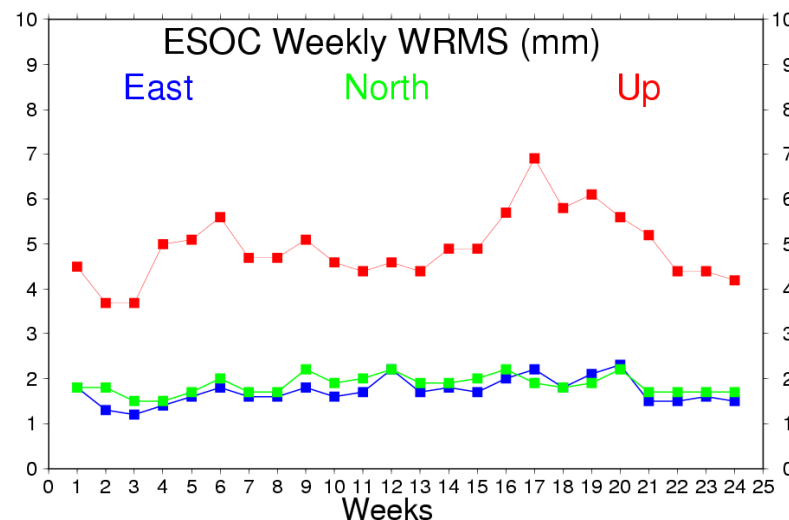
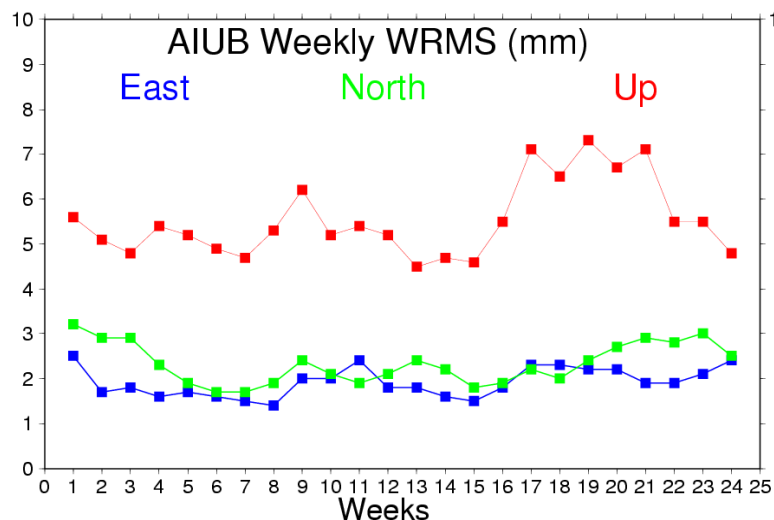
```

Drücken Sie F1, um die Hilfe aufzurufen.

- **Continuous operation to start in September 2008**
- **Weekly solutions validated with IGS Finals**
- **Semi-annual releases**
- **Combination aligned to ITRF2005**

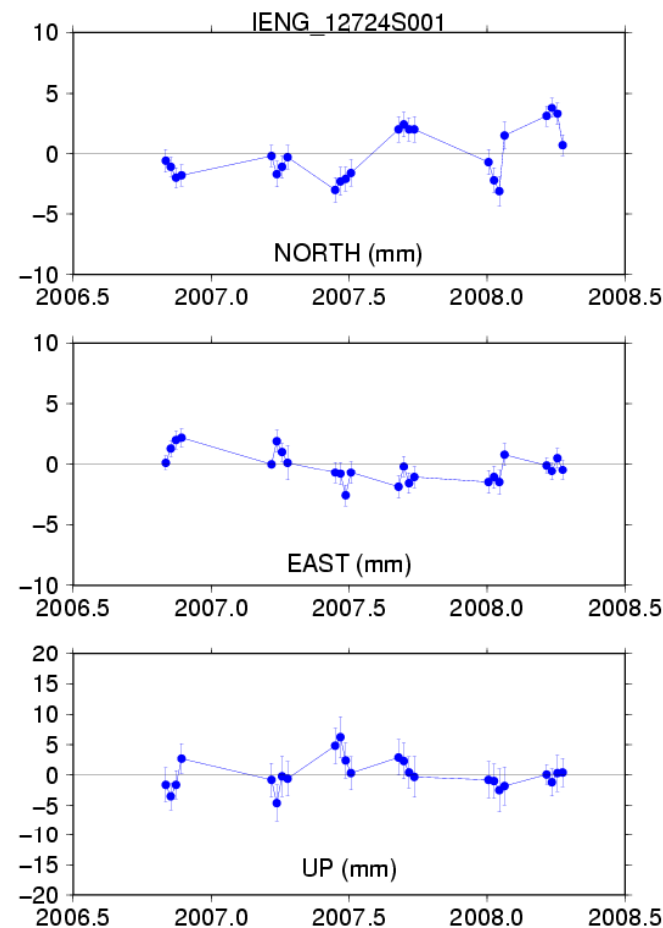
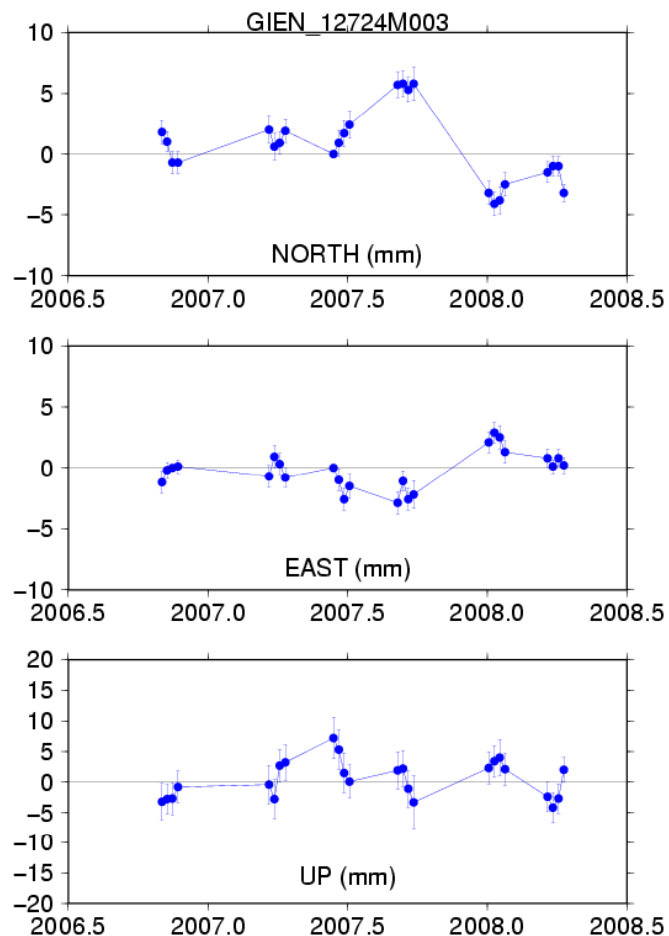


## Repeatability w.r.t. the cumulative solution



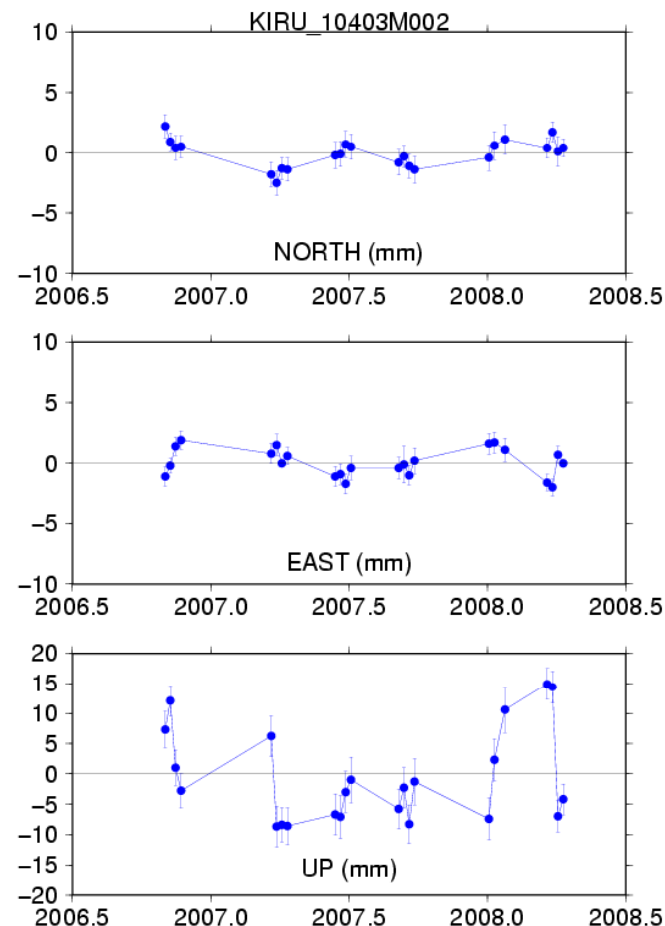
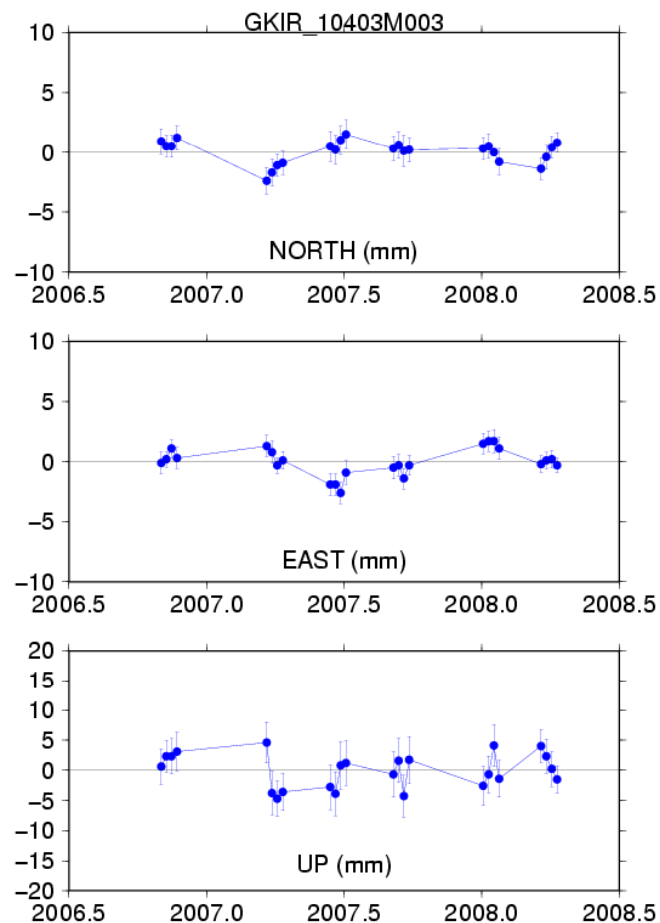
(Z. Altamimi, 2008)

## Torino, Italy



(Z. Altamimi, 2008)

## Kiruna, Sweden

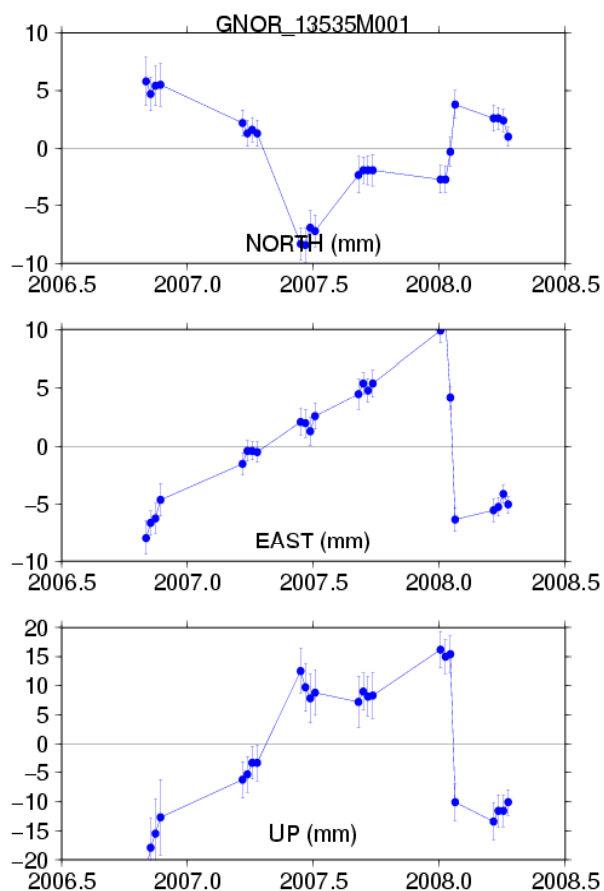


(Z. Altamimi, 2008)

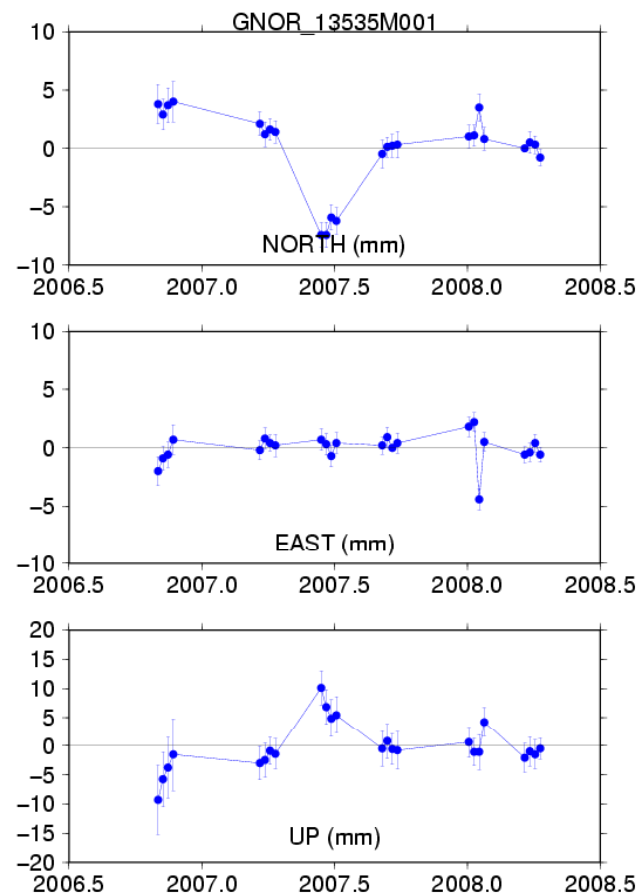


Nordwijk, The Netherlands (ESTEC test site)

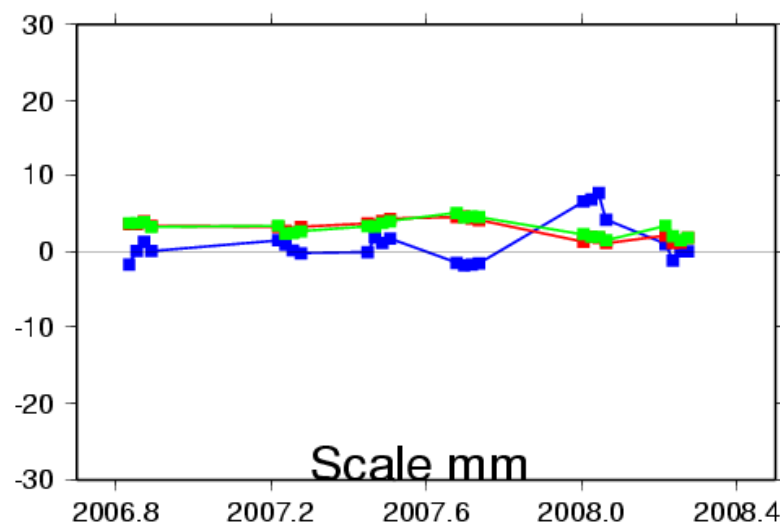
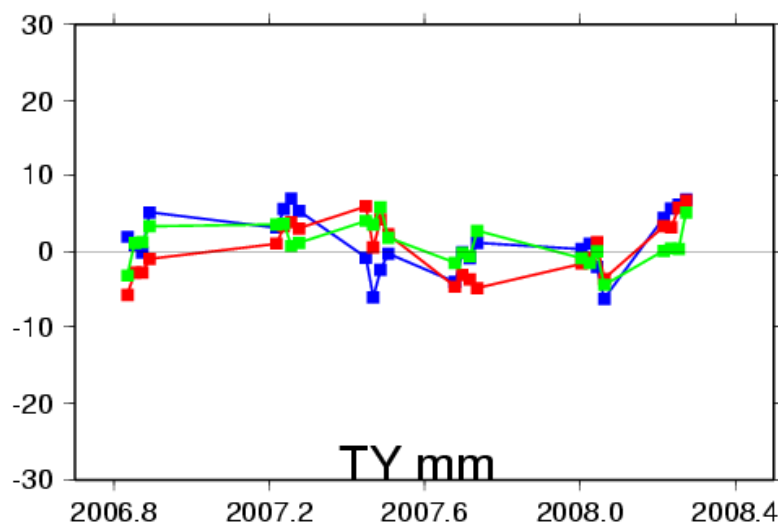
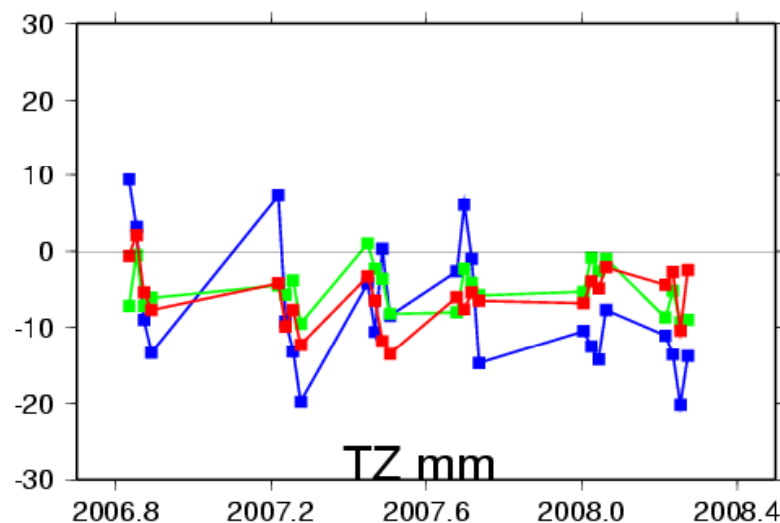
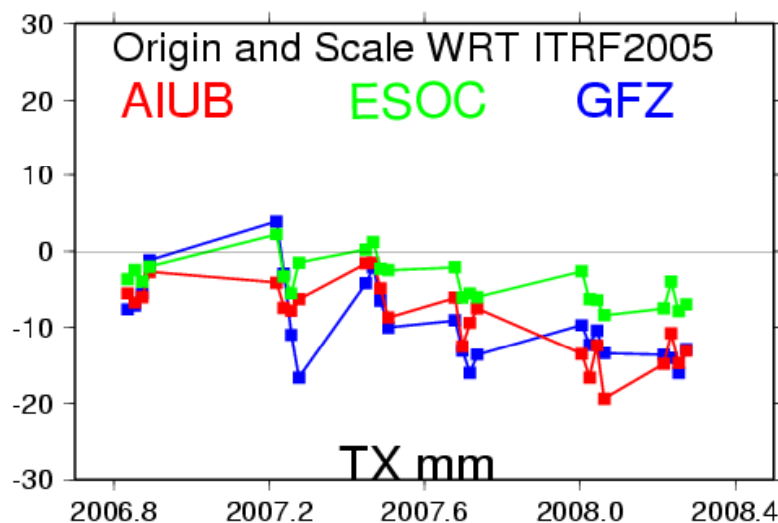
Without discontinuity



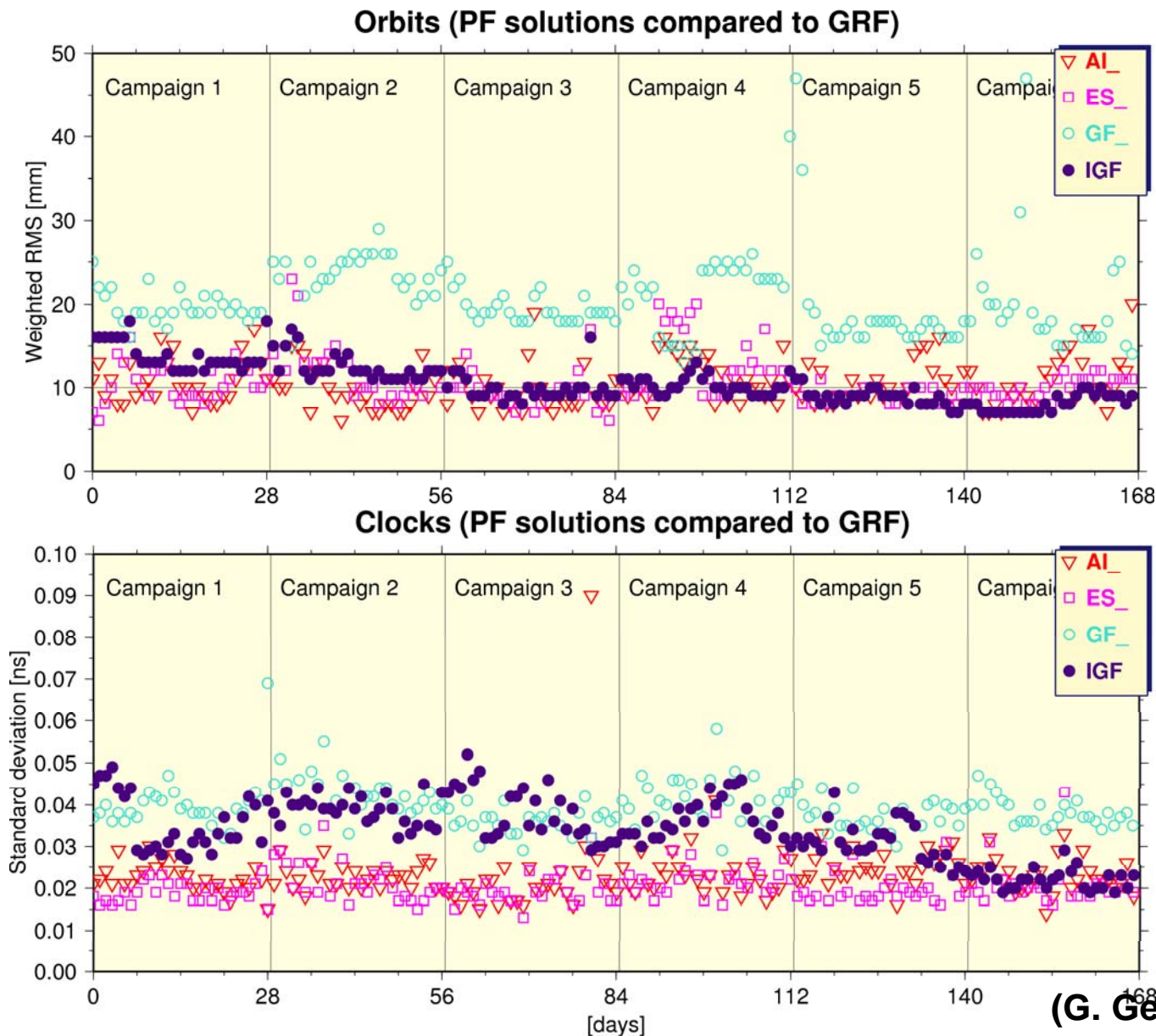
Discontinuity introduced

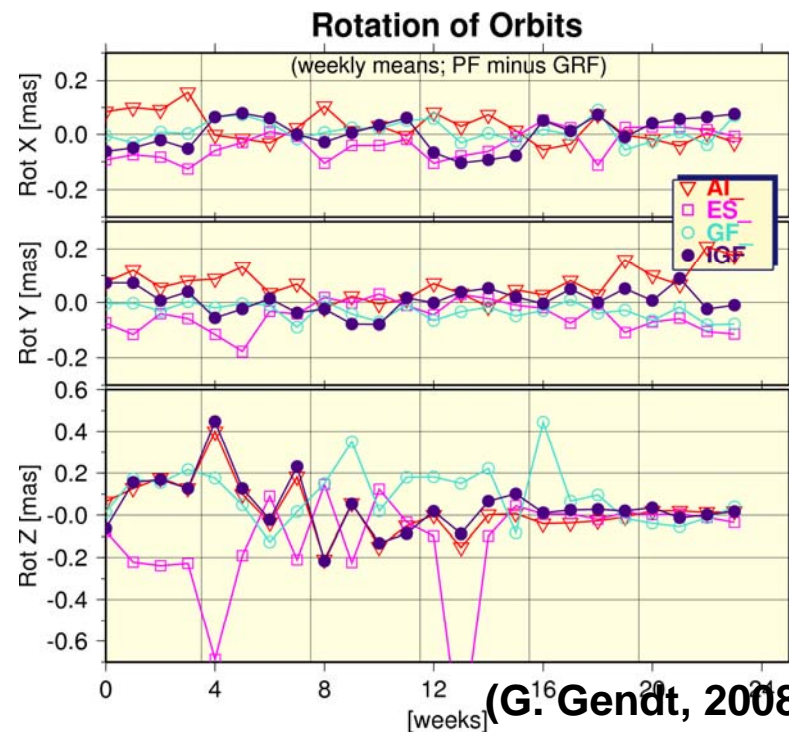
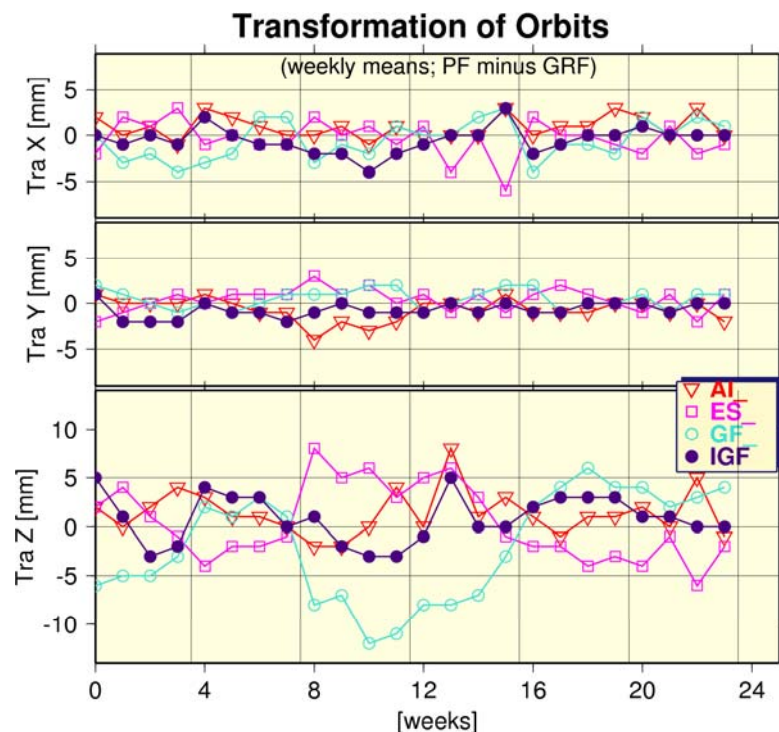
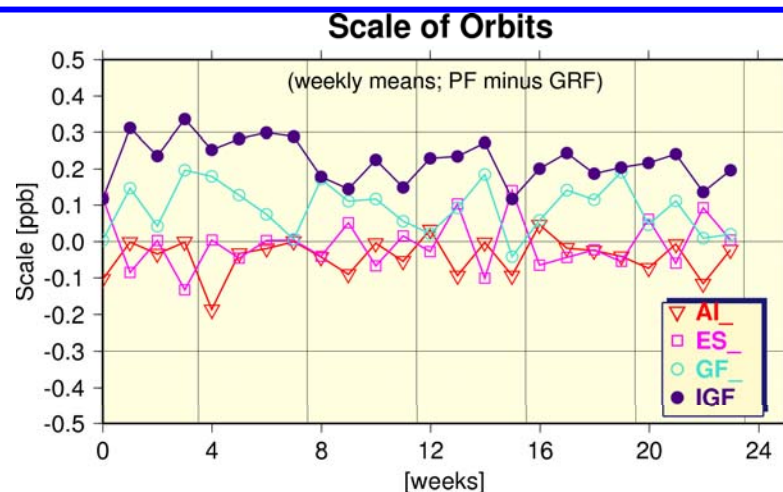


(Z. Altamimi, 2008)



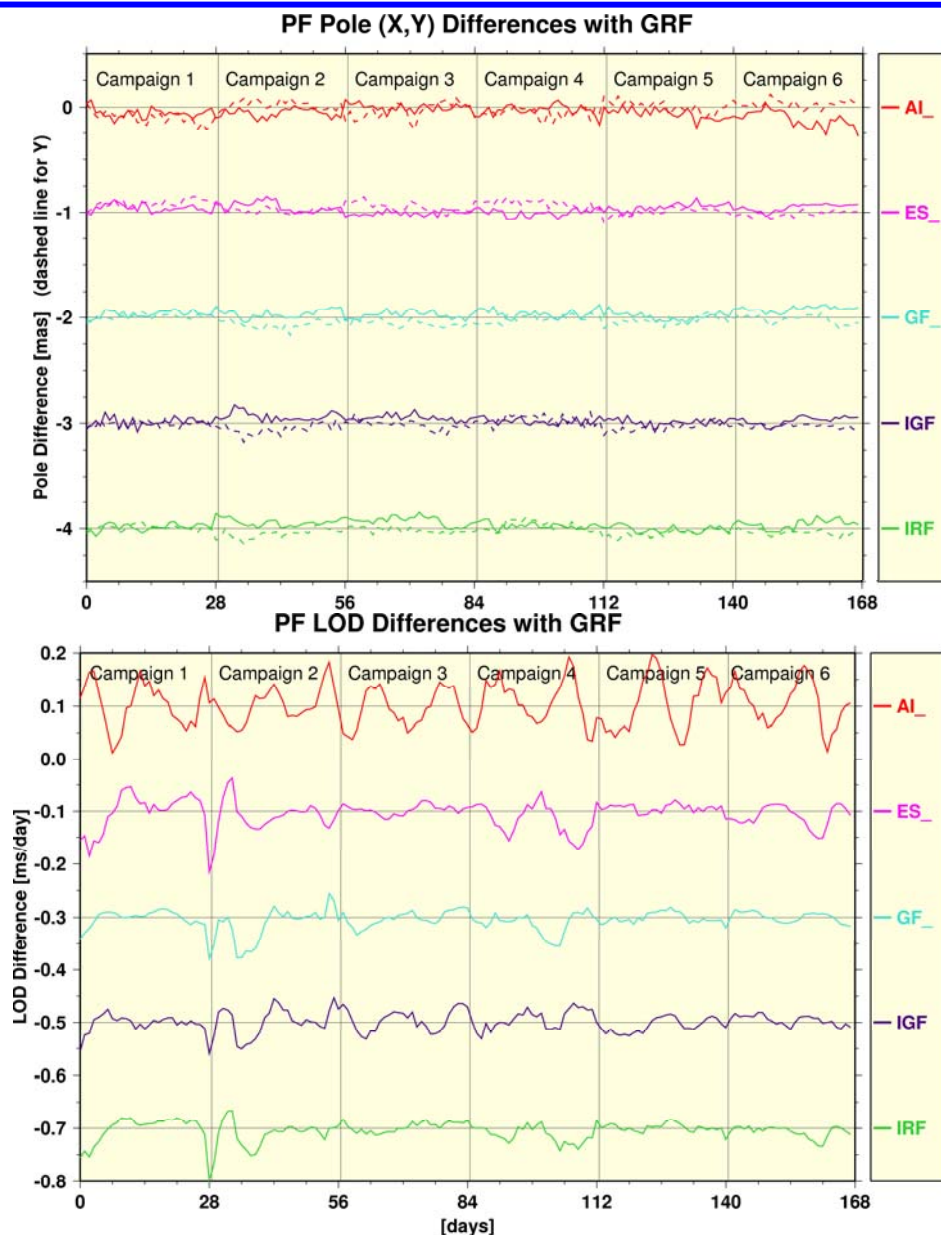
(Z. Altamimi, 2008)





(G. Gendt, 2008)





(G. Gendt, 2008)

**I.e. phase between the end of GGSP prototype and IOV**

- **Continuation of GESS monitoring**
- **Continuation of estimating versioned GTRF realization**
- **Starting of permanent processing in September 2008 until IOV**
- **Simulations concerning number and distribution of GSS**
- **Gradually substitution of IGS sites by GSS**



- Upgrade of existing IGS+EPN stations to GPS + GLONASS + Galileo stations
- Inclusion of GSS into the IGS+EPN
- Extension of IGS+EPN products for Galileo
- Preparing standards, data bases etc. for Galileo
- Development of user-specific products to increase the acceptance of the GRSP

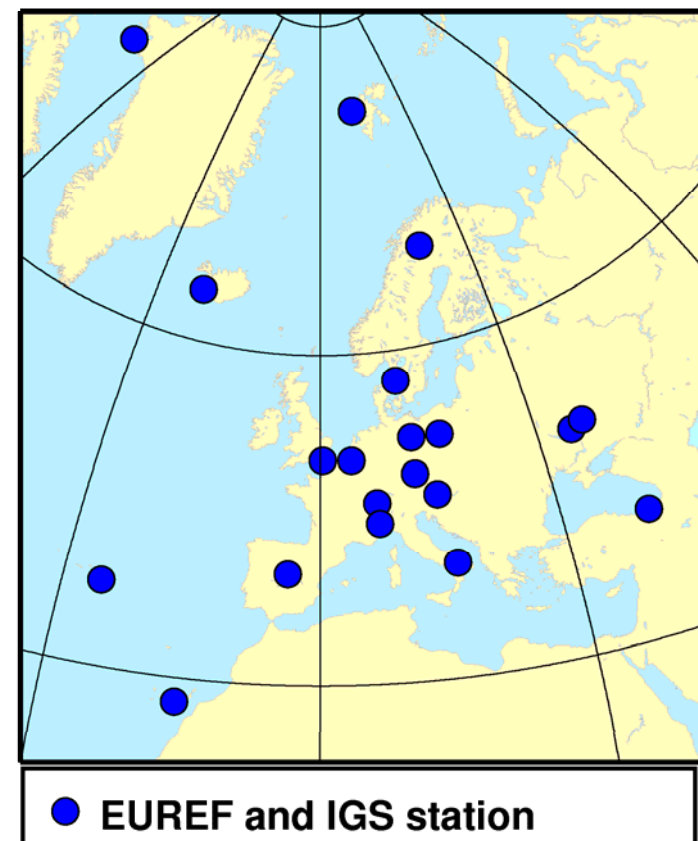
## ● Selection criteria of IGS/EPN stations

- ◆ Co-location with VLBI/SLR
- ◆ High-quality time reference
- ◆ Proposed Galileo site

## ● 21 EPN/IGS sites in GTRF

- ◆ 6 GPS+GLONASS
- ◆ 7 ECGN

## ● Encourage GRSP to announce the GSS as EPN stations



# Thank you for your attention!

<http://www.ggsp.eu>